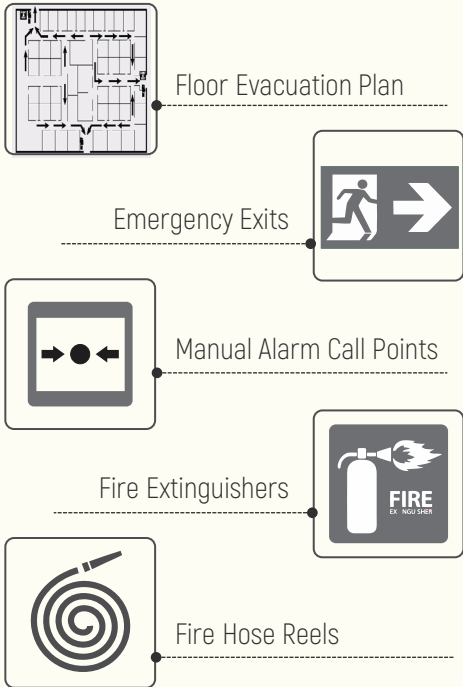


An emergency comes without a warning, so here are some tips to help you stay prepared.

1 KNOW YOUR EMERGENCY EXITS & EVACUATION ROUTES

BE FAMILIAR WITH SIGNS



FOLLOW THE INSTRUCTIONS of the building and Area Fire Wardens

FOLLOW DIRECTIONAL SIGNS



to emergency exits



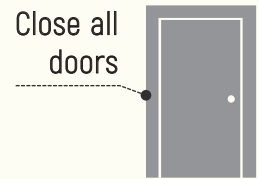
PLEASE BE RESPONSIVE TO FIRE ALARM sounds and evacuation announcements



If the evacuation alarm sounds, **LEAVE THE BUILDING IMMEDIATELY**



Close all windows



Close all doors

DO NOT RETURN to collect your belongings

2 BE SAFE AND ACT WITH CAUTION

DO NOT OPEN THE DOOR

if it feels warm to the back of your hand. Warm or hot door temperatures could indicate **FIRE ON THE OTHER SIDE**

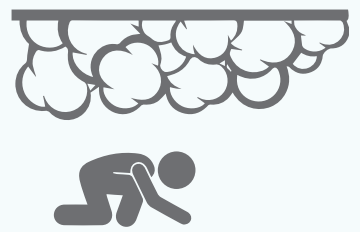


IF EXIT ROUTE IS BLOCKED, STAY PUT.



Open a window and wave to **SIGNAL FOR HELP** using something white such as a pillowcase or a piece of clothing

STAY LOW AND CRAWL



to avoid breathing in smoke

3 MOVE QUICKLY TO YOUR ASSEMBLY POINT



ASSEMBLY POINT IS LOCATED AT A SAFE DISTANCE, they are specially intended for evacuees to gather & remain safe



WALK QUICKLY AND CALMLY to your Assembly Point and remain there



Check if anyone is missing and report it immediately

4 SOUND AN ALARM & DIAL 997 FOR HELP

IF YOU DISCOVER A FIRE

activate nearest call point and



CALL 997



IF YOU ARE TRAINED TO USE A FIRE EXTINGUISHER

use an appropriate one to put out immediate fire, only if able to do so

SHOUT

a warning to alert your neighbours and those close by

5 ALLOW ACCESS TO RESCUE & MEDICAL UNITS



DUBAI CIVIL DEFENCE WILL CONDUCT ALL **RESCUE AND MEDICAL DUTIES**



DO NOT MOVE AN INJURED PERSON, keep him/her lying down, covered and warm

6 UPDATE YOUR DETAILS

CALL 800 EMAAR

UPDATE NUMBER OF PERSONS

in your apartment, to assist in case of emergency



NOTIFY

DISABILITIES / IMMOBILE ELDERLY PERSONS

with their conditions to help us provide assistance during evacuation



A DEDICATED AIDE

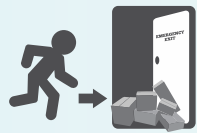
will be assigned to assist them during a fire evacuation

7 REPORT ANY DEFECTS OR ISSUES IF YOU NOTICE



Damaged or tampered fire rescue or protection equipment

BLOCKED EMERGENCY EXIT



Fire doors not closing properly, or



If you believe you have a faulty detector or sprinkler head

Report it immediately to communities@ecm.ae or call us on 800 EMAAR (36227 800).

Emaar Community Management will not be held liable for any damages or losses you may incur.